



For more information:

[info@britodev.com](mailto:info@britodev.com)

[www.serenobyhage.com](http://www.serenobyhage.com)

In the heart  
of Guaynabo

Financing available with  
Popular Mortgage  
787.707.1600



Follow  
us at:



The illustrations are interpretations of the artist, so they may not necessarily reflect the final product. These illustrations may feature furniture, equipment, and other accessories that are not included with the purchase. Please refer to the approved plans that support this publication. The developer reserves the right to substitute materials, furniture, and other items for those of similar or better quality.  
**DACO NOTICE:** Filing of this offer of sale document with the Department of Consumer Affairs does not necessarily constitute an approval of the sale or its terms, nor is it a guarantee that the information contained therein is correct. Biella LLC Lic SJ 18811-URB.



# The Ultimate Art of Refined Living

[www.serenobyhage.com](http://www.serenobyhage.com)





## About the Project

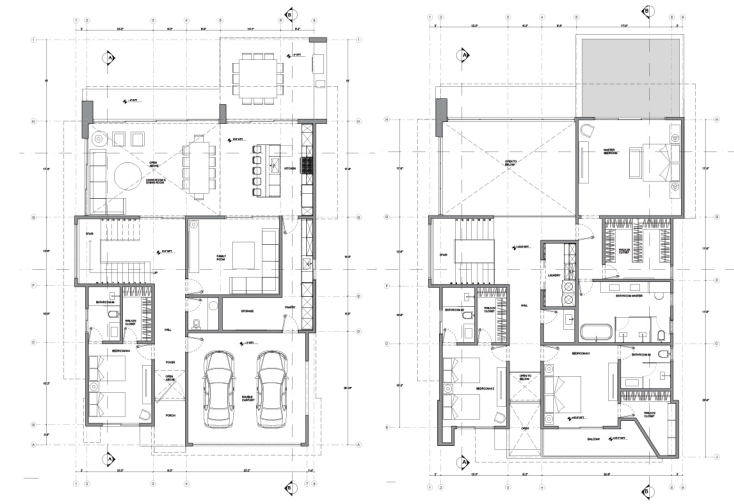
Sereno offers only 50 homes located in the best location remaining in the metropolitan area (Guaynabo). With lots ranging from 600m<sup>2</sup> to 2,000m<sup>2</sup>, these two story residences encompass some 4,750 square feet, each featuring four bedrooms and four and a half bathrooms. Prices Starting at \$2,099,000.00



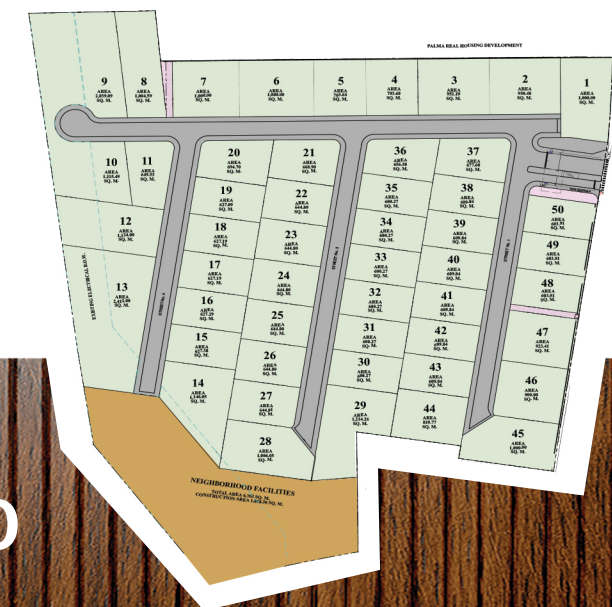
Enhancing the Sereno experience, the community will offer top-notch communal facilities, including a fully equipped gym, swimming pools, an exclusive owner's lounge, children's playgrounds, a dog playground, courts, and ample guest parking. These amenities are designed to provide a comprehensive and active living environment for all residents and their guests.

Construction is scheduled to commence on February 29th, 2024, with the first deliveries expected by the end of 2024.

## Property Features



- The best product, in the best location in Guaynabo with an unique architectural design by acclaimed Brazilian architect Ben Hur el-Hage.
- Spacious high ceilings stand at 10 feet on the first floor and 9 feet high on the second.
- The living and dining area showcase a stunning double-height 20-foot ceiling.
- 4 spacious bedrooms, each with its own en-suite bathroom and walk-in closet with an additional powder room (4 Bed/4.5 Bath).
- A standard covered, concrete terrace 20' x 15' with 10' ceilings.
- A butler's pantry, equipped with a spacious pantry/freezer area and an additional sink.
- Standard gas appliance connections are available in each home.
- An spacious second-floor laundry room, complete with ironing and storage space.
- High-quality security doors and windows for enhanced safety.
- European-style kitchens with stone countertops and backsplashes.
- A private family room offering a dditional space for relaxation.
- A practical storage (mud) room for convenience.
- Top of the line sanitaria and finishes.



Starting at:  
**\$2,099,000.00**